

Efni/Subject: Talnaefni Orkustofnunar / Orkustofnun Data Repository
 Titill/Title: Þróun raforkuframleiðslu á Íslandi (2016) / Development of electricity production in Iceland (2016)
 Lykilorð/Keyword: Þróun, raforkuvinnsla, uppruni, landsvæði, framleiðandi, upprunaábyrgðir / Development, electricity production, source, region, producer, guarantee of origin certificates
 Auðkenni/Identifier: OS-2017-T014-01
 Útgáfudagur/Date: 20.7.2017
 Síðast uppfært/Last edition
 Höfundur/Creator: Orkustofnun
 Tímabil/Period: 1.1.1969-31.12.2016
 Tilvísun: Orkustofnun (2017). OS-2017-T014-01: Þróun raforkuvinnslu á Íslandi (2016)
 Citation: Orkustofnun (2017). OS-2017-T014-01: Development of electricity production in Iceland (2016)

Tafla 1: Þróun raforkuframleiðslu 1969-2016
Table 1: Electricity production 1969-2016

Ár	Vatnsafl [kWst]	Jarðhiti [kWst]	Eldsneyti [kWst]	Vindur [kWst]	Samtals [MWh]	Samtals [GWh]	Árleg aukning [%]	Aukning milli áratuga [%]
Year	Hydro [kWh]	Geothermal [kWh]	Fuel [kWh]	Wind [kWh]	Total [MWh]	Total [GWh]	Yearly increase [%]	Increase between decades [%]
1969					784.340	784		
1970					1.337.722	1.338	71%	
1971					1.460.519	1.461	9%	
1972					1.624.642	1.625	11%	
1973					2.142.971	2.143	32%	
1974					2.187.610	2.188	2%	
1975					2.130.247	2.130	-3%	
1976					2.245.635	2.246	5%	
1977					2.406.590	2.407	7%	
1978					2.455.748	2.456	2%	
1979					2.699.438	2.699	10%	
1980					2.919.661	2.920	8%	118%
1981					3.021.731	3.022	3%	
1982					3.340.330	3.340	11%	
1983					3.766.028	3.766	13%	
1984					3.914.203	3.914	4%	
1985					3.837.410	3.837	-2%	
1986					4.057.842	4.058	6%	
1987					4.152.033	4.152	2%	
1988					4.415.945	4.416	6%	
1989					4.475.226	4.475	1%	
1990					4.447.226	4.447	-1%	52%
1991					4.425.218	4.425	0%	
1992	4.304.298	229.769	4.853	-	4.538.920	4.539	3%	
1993	4.460.998	256.212	4.062	-	4.721.272	4.721	4%	
1994	4.509.295	259.634	3.832	-	4.772.761	4.773	1%	
1995	4.677.187	290.238	8.432	-	4.975.857	4.976	4%	
1996	4.762.314	345.947	3.376	-	5.111.637	5.112	3%	
1997	5.201.305	375.254	2.967	-	5.579.526	5.580	9%	
1998	5.615.576	654.961	3.868	-	6.274.405	6.274	12%	
1999	6.041.841	1.137.979	4.168	-	7.183.988	7.184	14%	
2000	6.350.488	1.322.950	4.447	-	7.677.885	7.678	7%	73%
2001	6.572.595	1.451.244	3.227	-	8.027.066	8.027	5%	
2002	6.970.682	1.433.450	5.440	-	8.409.572	8.410	5%	
2003	7.082.327	1.406.150	4.942	-	8.493.419	8.493	1%	
2004	7.131.893	1.483.489	4.708	-	8.620.090	8.620	1%	
2005	7.015.286	1.657.997	7.831	-	8.681.114	8.681	1%	
2006	7.288.997	2.631.272	4.574	-	9.924.843	9.925	14%	
2007	8.393.735	3.578.547	3.456	-	11.975.739	11.976	21%	
2008	12.427.433	4.037.656	2.662	-	16.467.752	16.468	38%	
2009	12.279.343	4.553.087	2.932	-	16.835.362	16.835	2%	
2010	12.592.082	4.465.323	1.689	-	17.059.093	17.059	1%	122%
2011	12.506.839	4.701.463	2.104	8	17.210.413	17.210	1%	
2012	12.336.530	5.209.539	2.839	-	17.548.908	17.549	2%	
2013	12.862.843	5.245.021	2.750	5.485	18.116.099	18.116	3%	
2014	12.873.015	5.238.414	2.391	8.386	18.122.205	18.122	0%	
2015	13.780.770	5.003.003	3.904	10.894	18.798.570	18.799	4%	
2016	13.469.596	5.067.280	2.683	9.210	18.548.768	18.549	-1%	

Tafla 2: Uppruni raforku á Íslandi 2010-2016 eftir viðskipti með upprunaábyrgðir
Table 2: Source of electricity in Iceland 2010-2016 after trade with certificates of origin

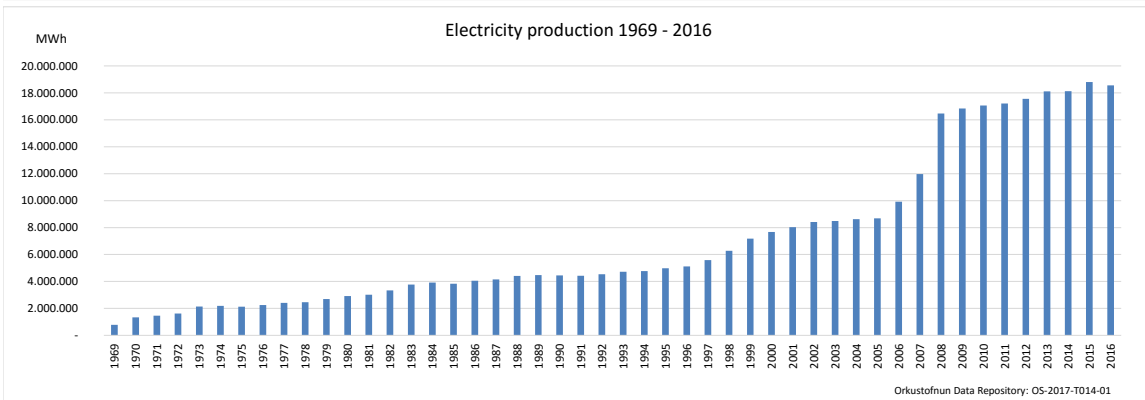
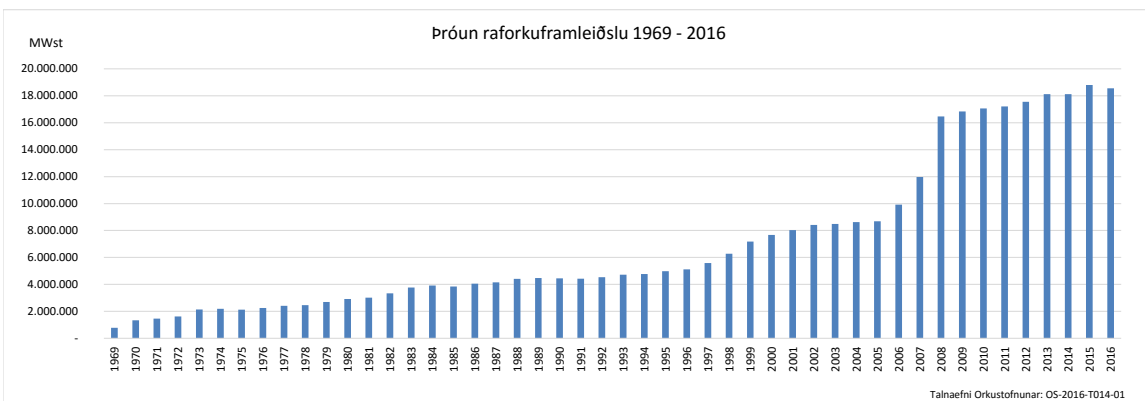
Uppruni / Source	2010	2011	2012	2013	2014	2015	2016
Endurnýjanleg orka / Renewable	100%	89%	63%	39%	45%	71%	21%
Kjarnorka / Nuclear	0%	5%	16%	24%	23%	12%	20%
Eldsneyti / Fuel	0%	6%	21%	37%	32%	17%	59%
Samtals	100%	100%	100%	100%	100%	100%	100%

Tafla 3: Þróun raforkuframleiðslu eftir landsvæðum 2003-2016
Table 3: Electricity production by region 2003-2016

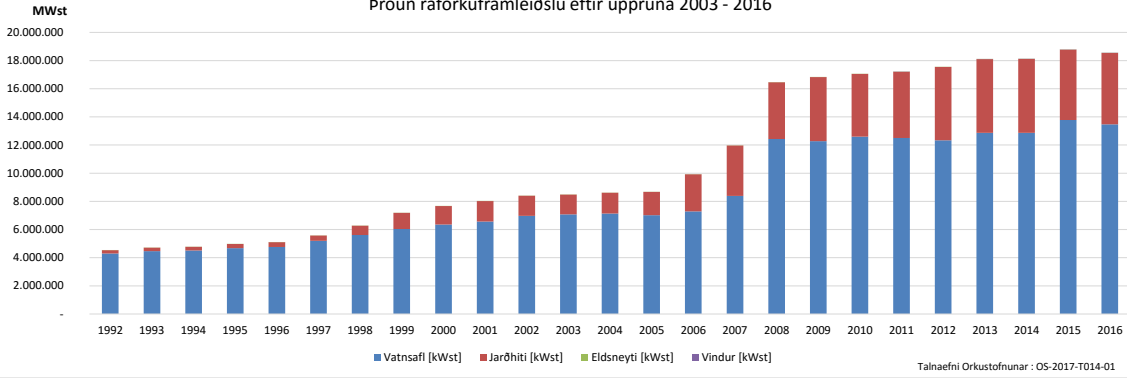
Landsvæði	Höfuðborgarsvæðið [MWst]	Reykjanes [MWst]	Vesturland [MWst]	Vestfirðir [MWst]	Norðurland vestra [MWst]	Norðurland eystra [MWst]	Austurland [MWst]	Suðurland [MWst]	Samtals [MWst]
Region	Capital Region [MWh]	Reykjanes Peninsula [MWh]	West [MWh]	Westfjords [MWh]	North-West [MWh]	North-East [MWh]	East [MWh]	South [MWh]	Total [MWh]
2003	5.644	369.942	44.855	82.369	961.388	563.985	90.612	6.374.624	8.493.419
2004	5.349	376.775	48.562	92.606	948.654	591.975	91.654	6.464.515	8.620.090
2005	7.053	371.670	46.076	86.775	845.342	695.672	78.796	6.549.729	8.681.114
2006	4.237	882.376	66.474	93.151	880.536	753.473	69.109	7.175.488	9.924.843
2007	3.578	1.214.267	63.547	102.882	986.374	750.668	489.194	8.365.229	11.975.739
2008	4.034	1.431.482	62.683	98.320	1.008.345	691.686	4.967.560	8.203.643	16.467.752
2009	3.474	1.392.200	60.962	94.349	846.759	699.189	5.051.292	8.687.137	16.835.362
2010	1.476	1.349.226	43.269	83.393	865.618	713.674	5.303.782	8.698.656	17.059.093
2011	85	1.327.237	62.283	88.420	842.924	654.542	5.116.707	9.118.216	17.210.413
2012	1.649	1.295.106	56.604	104.678	878.559	693.299	5.099.159	9.419.855	17.548.908
2013	1.594	1.349.743	51.740	100.747	835.795	710.188	5.259.896	9.806.397	18.116.099
2014	704	1.337.442	58.874	100.909	762.385	708.447	5.339.808	9.813.637	18.122.205
2015	-	1.294.107	76.683	113.540	849.407	721.225	5.283.057	10.460.544	18.798.564
2016	-	1.189.249	71.379	108.350	763.170	641.940	5.350.592	10.424.087	18.548.768

Tafla 3: Þróun raforkuframleiðslu eftir framleiðanda 2010-2016
Table 3: Electricity production by producer 2010-2016

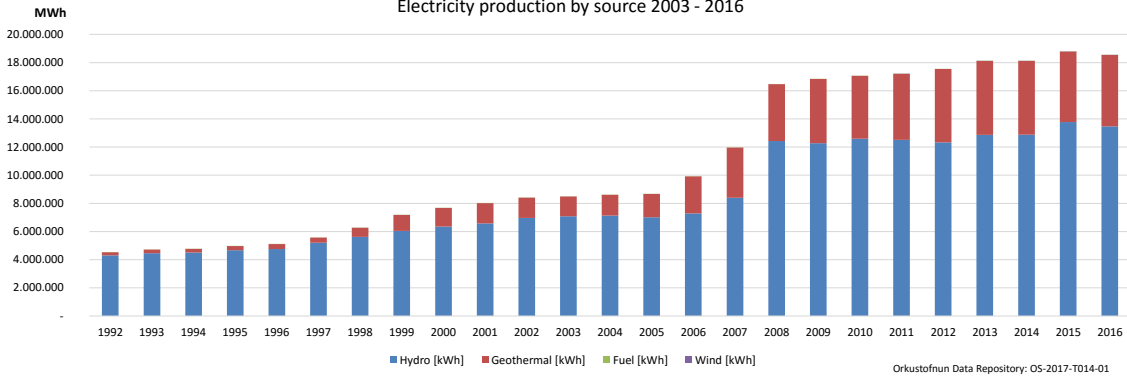
Framleiðandi / Producer	2010 [MWh]	2011 [MWh]	2012 [MWh]	2013 [MWh]	2014 [MWh]	2015 [MWh]	2016 [MWh]
Landsvirkjun	12.624.688	12.485.515	12.311.873	12.838.236	12.810.770	13.714.501	13.409.951
Orka náttúrunnar	2.621.370	2.905.051	3.452.752	3.421.772	3.443.363	3.249.179	3.411.292
HS Orka	1.349.226	1.327.237	1.295.106	1.349.743	1.337.442	1.294.113	1.189.249
Orkusalan	260.953	264.408	259.494	266.402	275.606	268.938	268.782
Smávirkjanir - Small scale	122.818	143.740	131.416	131.166	147.821	154.249	149.177
Orkubú Vestfjarða	73.989	77.650	91.276	85.658	85.774	94.117	90.490
Norðurorka	1.542	1.830	1.138	17.348	17.322	18.468	18.612
Rafveita Reyðarfjarðar	1.440	1.510	1.547	1.029	1.587	1.978	2.015
Landsnet	-	-	-	-	117	1.425	757
RARIK	2.935	3.339	4.154	4.569	2.346	1.181	8.316
HS Veitur	133	135	153	177	57	422	127
Rafmagnsveita Húsavíkur	-	-	-	-	-	-	-
Samtals / Total	17.059.093	17.210.413	17.548.908	18.116.099	18.122.205	18.798.570	18.548.768



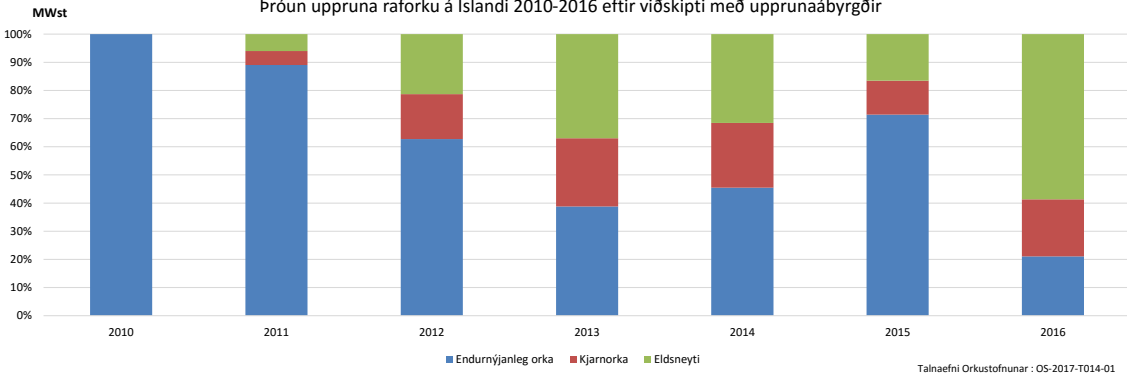
Þróun raforkuframleiðslu eftir uppruna 2003 - 2016



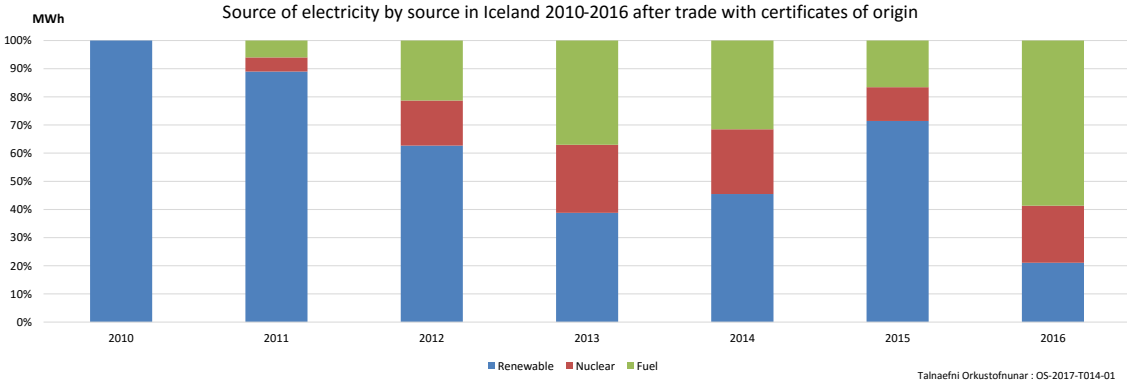
Electricity production by source 2003 - 2016



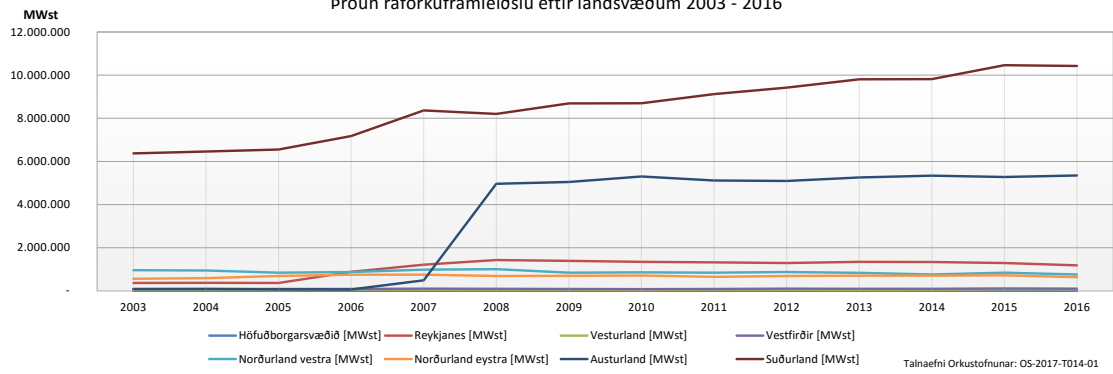
Þróun uppruna raforku á Íslandi 2010-2016 eftir viðskipti með upprunaábyrgðir



Source of electricity by source in Iceland 2010-2016 after trade with certificates of origin



Þróun raforkuframleiðslu eftir landsvæðum 2003 - 2016



Electricity production by region 2003-2016

